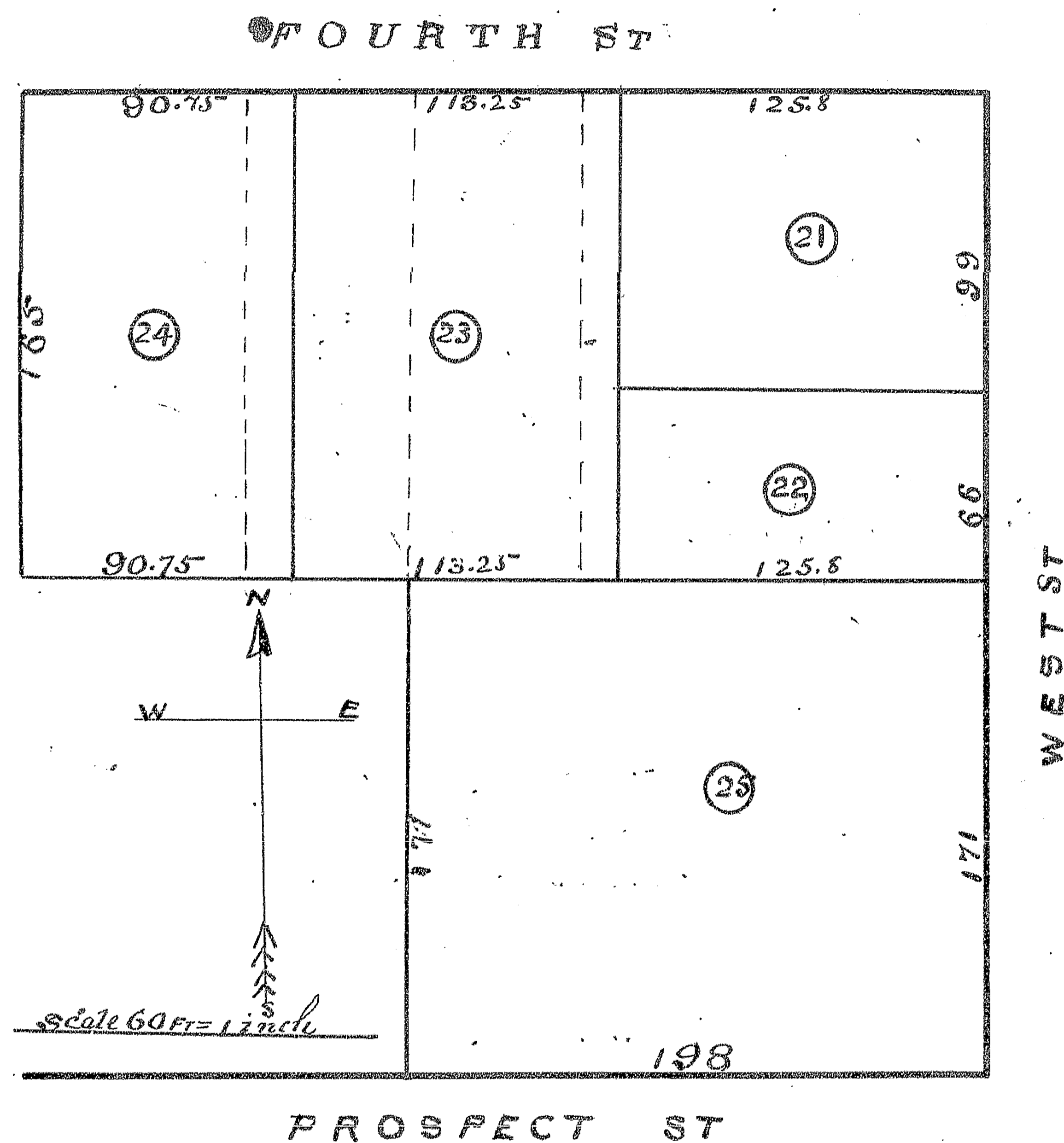


# REVENUE PLAT 1904

OF

A SUBDIVISION OF ORIGINAL LOTS 1, 2, 3 & 4  
OF BLOCK 111 OF SECOND SOUTHERN ADDITION  
TO GALESBURG KNOX COUNTY ILL.



STATE OF ILLINOIS, }  
Knox County. } ss.

I, C. S. RICHEY, County Surveyor of said Knox County, do hereby certify that the foregoing and annexed is a true and correct Plat and description of Lands advertised for Survey and Platting by the County Clerk, as taken from the records of Knox County, and by measurements and survey, as provided for in Sections 62 and 63, Chapter 120, Revised Statutes of Illinois, 1903.

Dated this 29th day of March, 1904.

C. S. RICHEY, County Surveyor.

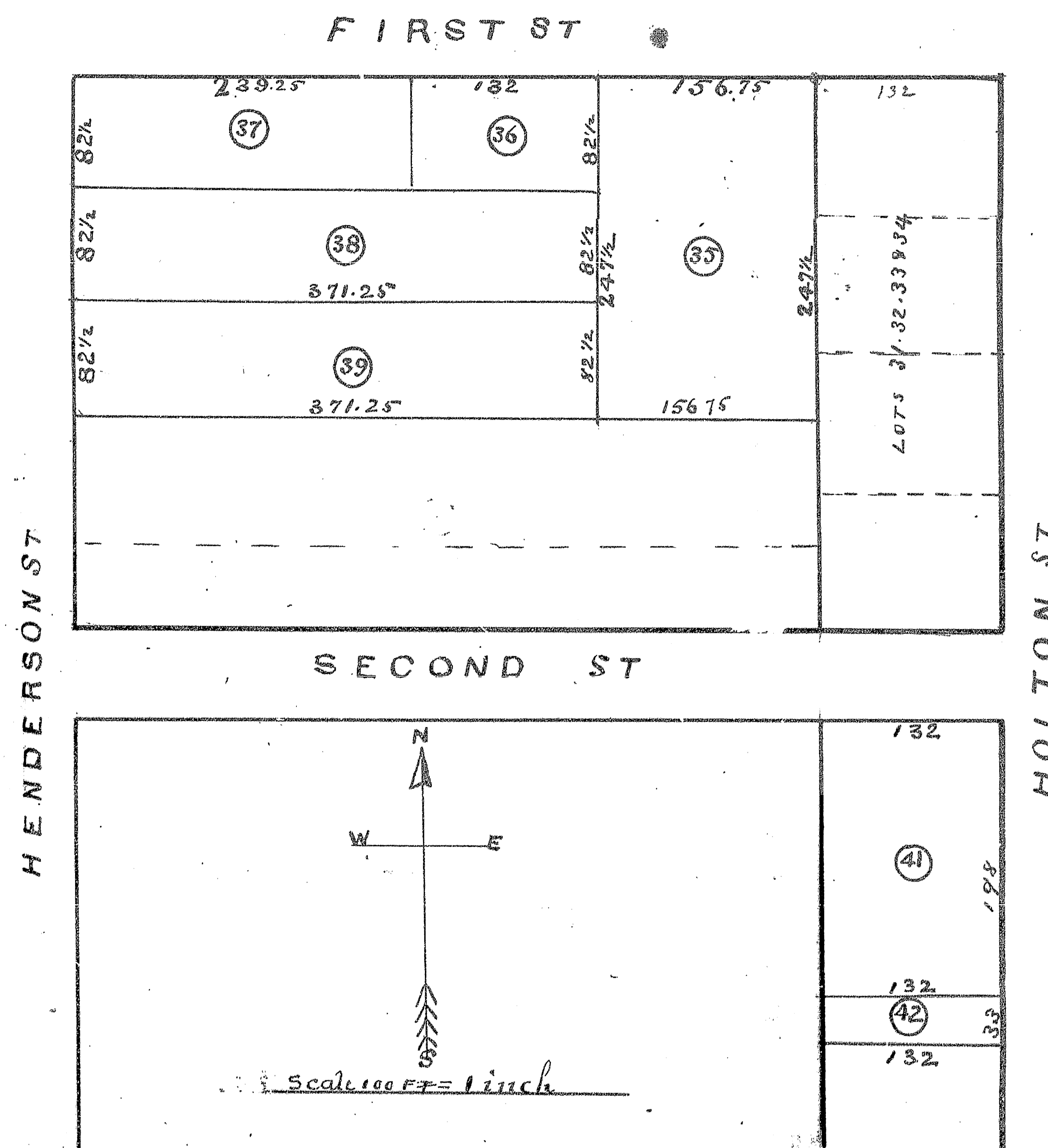
Approved by me, this 29th day of March, 1904.

FRANK L. ADAMS, County Clerk.

# REVENUE PLAT 1904

OF

A SUBDIVISION OF LOTS 1, 2, 3, 28, 29 & 30  
OF A RESUBDIVISION OF VACATED BLOCKS 88, 101, 102 & 114  
OF SECOND SOUTHERN ADDITION TO GALESBURG  
KNOX Co ILL.



STATE OF ILLINOIS, }  
Knox County. } ss.

I, C. S. RICHEY, County Surveyor of said Knox County, do hereby certify that the foregoing and annexed is a true and correct Plat and description of Lands advertised for Survey and Platting by the County Clerk, as taken from the records of Knox County, and by measurements and survey, as provided for in Sections 62 and 63, Chapter 120, Revised Statutes of Illinois, 1903.

Dated this 29th day of March, 1904.

C. S. RICHEY, County Surveyor.

Approved by me, this 29th day of March, 1904.

FRANK L. ADAMS, County Clerk.